



Presented at



## Managing global health research collaborations

Dr Joanna Raven  
Liverpool School of Tropical Medicine





## Outline

---

- Introduction to programmes
- Approaches used to manage global health research collaborations
- Challenges

# Introduction

- Learning from multi-country research consortia:
  - ReBUILD for Resilience (2020 – 2026)
  - ReBUILD (2011- 2018)
  - PERFORM (2011- 215)
  - PERFORM2Scale (2018-2022)
  - REDRESS (2019-2023)
- Funded through European Commission, FCDO/UKAid and NIHR
- Partnerships across Europe, Africa, and Asia with higher education institutions and NGOs



Freetown, courtesy Queen Margaret University



## 2. Transparent & distributed decision-making

- Decision-making responsibility within collaboration
- Governance structure reflects transparent decision-making processes
- Mechanisms for distributed leadership





### 3. Building an effective team

- Identifying the staff needed to fulfil research objectives
- Roles and responsibilities agreed early
- Equitable allocation of resources to allow for recruitment of staff
- Dedicated programme management and support

*PERFORM2Scale team in Ghana*

## 4. Embedding capacity strengthening

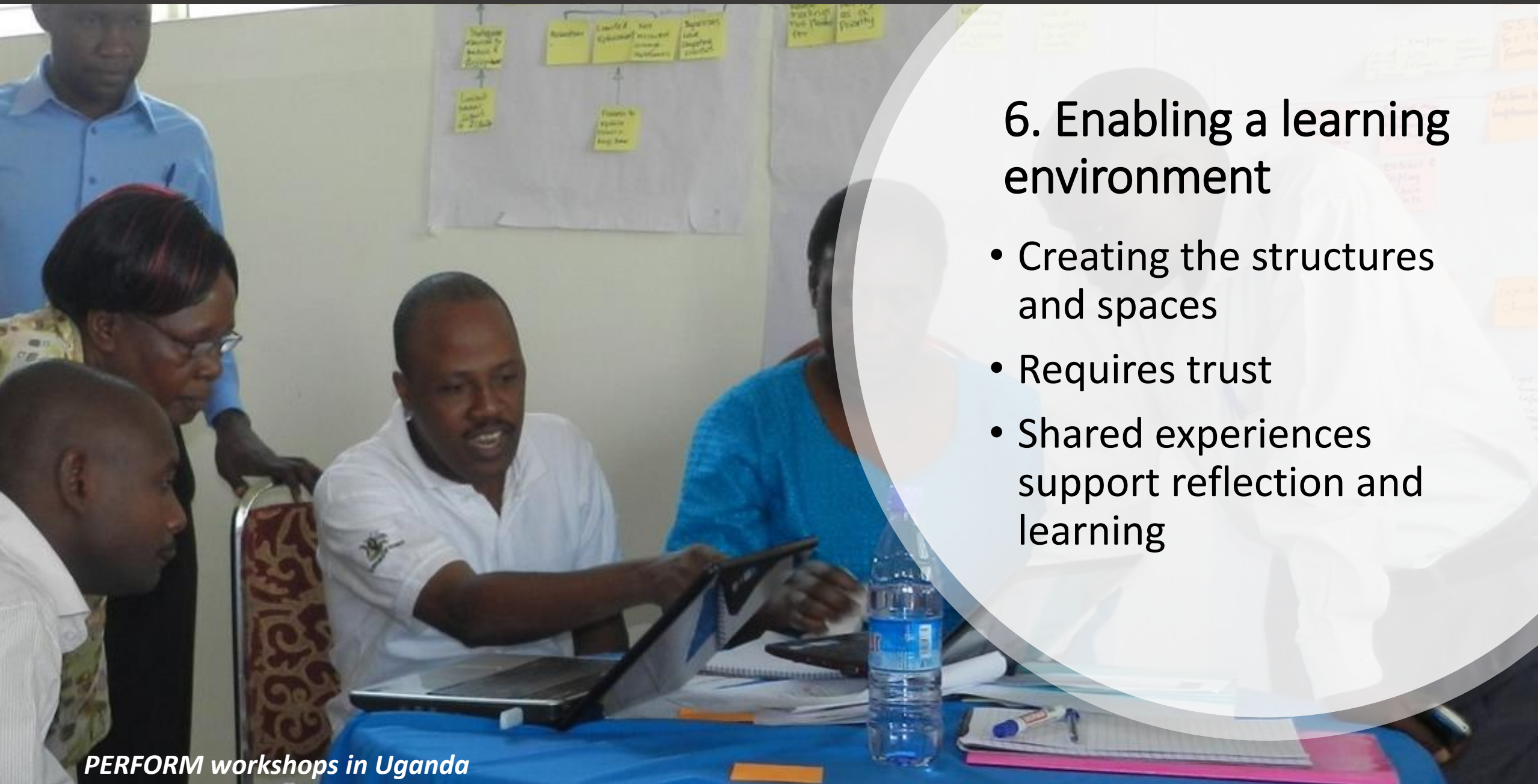
- Opportunity to develop own knowledge and skills
- Capacity strengthening at organisational and institutional levels
- Mix of approaches

## 5. Making communication work

- Simple effective systems for communication and file sharing
- Regular communication
- Opportunities for the full consortium to come together







## 6. Enabling a learning environment

- Creating the structures and spaces
- Requires trust
- Shared experiences support reflection and learning

## Challenges

- Lack of face-to-face meetings can make relationship building challenging
- Capacity gaps to support research implementation
- Delays in ethical approval for research studies
- Meeting deliverables can be challenging



*Image Kellie Ryan/IRC  
Healthcare workers at Beni Hospital in Beni,  
Democratic Republic of Congo*



Thank you

Dr Joanna Raven  
[joanna.raven@lstmed.ac.uk](mailto:joanna.raven@lstmed.ac.uk)

@ReBUILDRPC @PERFORM2Scale

